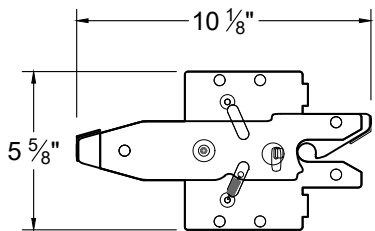
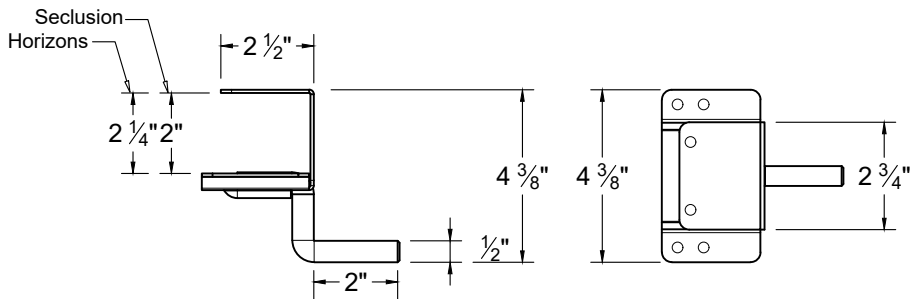


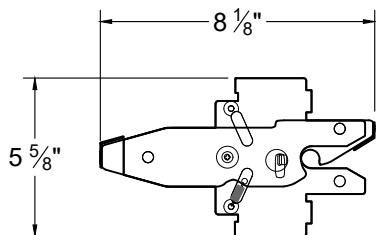
### SINGLE GATE LATCH



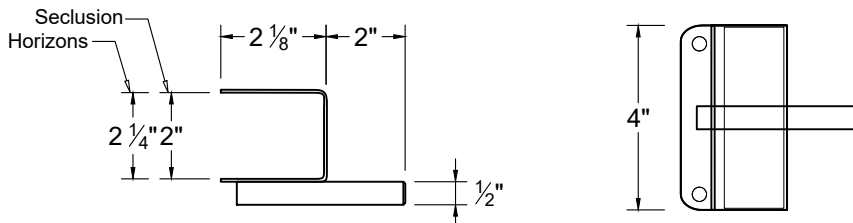
### SINGLE GATE STRIKER



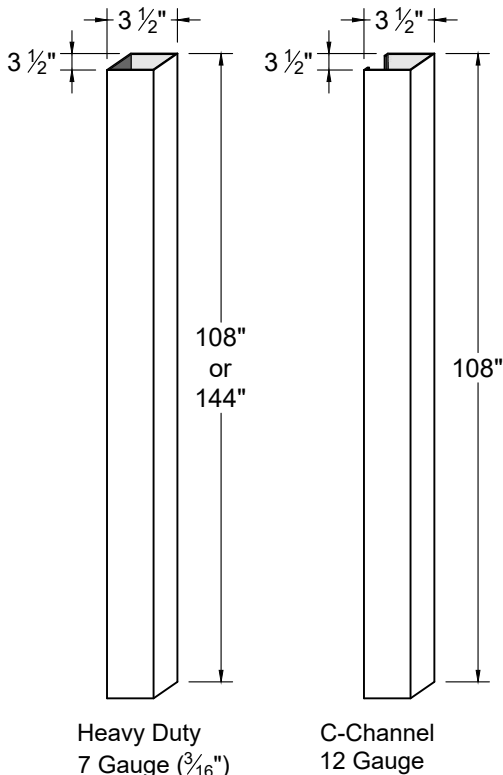
### DOUBLE GATE LATCH



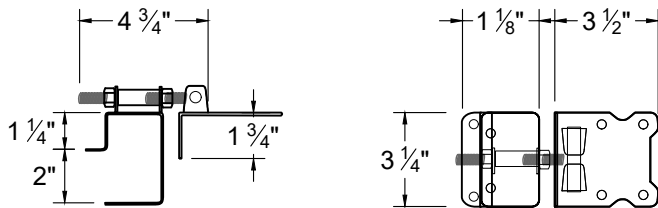
### DOUBLE GATE STRIKER



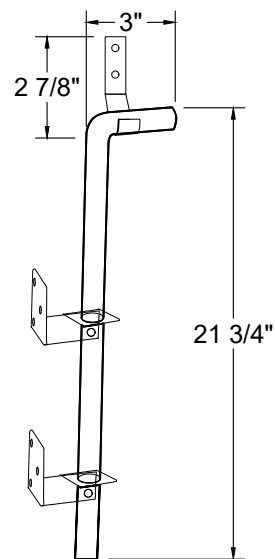
### GALVANIZED STEEL GATE POST STIFFENER



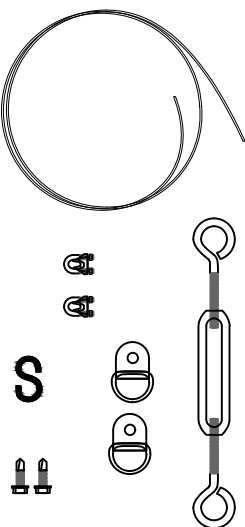
### ADJUSTABLE HINGE



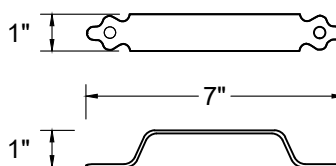
### DROP ROD ASSEMBLY



### OPTIONAL: ANTI-SAG CABLE KIT



### GATE HANDLE



### NOTES:

1. ALL TREX GATE HARDWARE IS BLACK POWDER COATED STAINLESS STEEL.
2. #14 SELF-DRILLING SCREWS ARE INCLUDED WITH HARDWARE.
3. INSTALLATION TO BE COMPLETED PER MANUFACTURER'S SPECIFICATION.
4. REFER TO [TrexFencingFDS.com](http://TrexFencingFDS.com) FOR CONSTRUCTION DETAILS AND PRODUCT INFORMATION
3. DRAWING NOT TO SCALE.

010923